

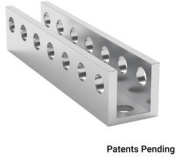
FTC Starter Kit
(8mm REX Shaft, 2022-2023 Season)
SKU: 3200-4008-2223



1101 Series U-Beam (1 Hole, 8mm Length)

SKU: **1101-0001-0008** x 2

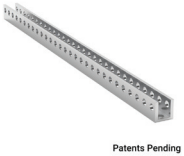
QTY: 2



1101 Series U-Beam (7 Hole, 56mm Length)

SKU: **1101-0007-0056** x 2

QTY: 2



1101 Series U-Beam (29 Hole, 232mm Length)

SKU: **1101-0029-0232** x 2

QTY: 2



1102 Series Flat Beam (7 Hole, 56mm Length) 2 Pack

SKU: **1102-0007-0056** x 1

QTY: 2



1102 Series Flat Beam (9 Hole, 72mm Length) 2 Pack

SKU: **1102-0009-0072** x 1

QTY: 2



1102 Series Flat Beam (29 Hole, 232mm Length) - 2 Pack

SKU: **1102-0029-0232** x 1

QTY: 2



1103 Series L-Beam (5 Hole, 40mm Length) 2 Pack

SKU: **1103-0005-0040** x 1

QTY: 2



1103 Series L-Beam (7 Hole, 56mm Length) 2 Pack

SKU: **1103-0007-0056** x 1

QTY: 2



1103 Series L-Beam (9 Hole, 72mm Length) 2 Pack

SKU: **1103-0009-0072** x 1

QTY: 2



1103 Series L-Beam (13 Hole, 104mm Length) 2 Pack

SKU: **1103-0013-0104** x 1

QTY: 2



1103 Series L-Beam (29 Hole, 232mm Length)

SKU: **1103-0029-0232** x 1

QTY: 2



1109 Series goRAIL (72mm Length)

SKU: **1109-0024-0072** x 3

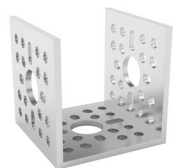
QTY: 3



1114 Series Flat Bracket (90-1)

SKU: **1114-0090-0001** x 1

QTY: 4

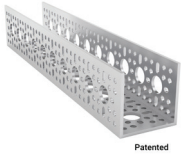


1120 Series U-Channel (1 Hole, 48mm Length)

SKU: **1120-0001-0048** x 2

QTY: 2

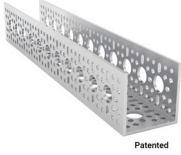
Patented



1120 Series U-Channel (10 Hole, 264mm Length)

SKU: **1120-0010-0264** x 2

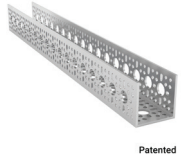
QTY: 2



1120 Series U-Channel (11 Hole, 288mm Length)

SKU: **1120-0011-0288** x 2

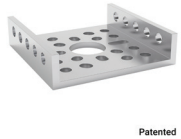
QTY: 2



1120 Series U-Channel (17 Hole, 432mm Length)

SKU: **1120-0017-0432** x 2

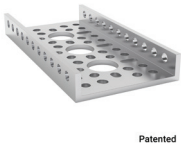
QTY: 2



1121 Series Low-Side U-Channel (1 Hole, 48mm Length)

SKU: **1121-0001-0048** x 2

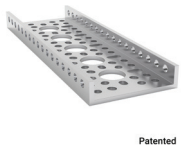
QTY: 2



1121 Series Low-Side U-Channel (3 Hole, 96mm Length)

SKU: **1121-0003-0096** x 2

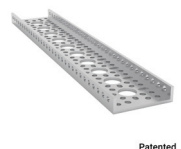
QTY: 2



1121 Series Low-Side U-Channel (5 Hole, 144mm Length)

SKU: **1121-0005-0144** x 2

QTY: 2



1121 Series Low-Side U-Channel (10 Hole, 264mm Length)

SKU: **1121-0010-0264** x 2

QTY: 2



Patented

1121 Series Low-Side U-Channel (17 Hole, 432mm Length)

SKU: **1121-0017-0432** x 2

QTY: 2



1137 Series Steel Flat Grid Bracket (1-2) - 2 Pack

SKU: **1137-0001-0002** x 2

QTY: 4



1139 Series Steel Grid Plates (3 x 7 Hole, 24 x 56mm)

SKU: **1139-0024-0056** x 2

QTY: 4



1201 Series Quad Block Pattern Mount (43-2)

SKU: **1201-0043-0002** x 8

QTY: 8



1203 Series Block Mount (1-1) 4 Pack

SKU: **1203-0001-0001** x 2

QTY: 8



1205 Series Dual Block Mount (1-5) - 2 Pack

SKU: **1205-0001-0005** x 2

QTY: 4



Battery Mount (32-1)

SKU: **1209-0032-0001** x 1

QTY: 1



1309 Series Sonic Hub (8m REX Bore)

SKU: **1309-0016-4008** x 10

QTY: 10



1310 Series Hyper Hub (8mm REX Bore)

SKU: **1310-0016-4008** x 4

QTY: 4



Matrix 12V 3000mAh NiMH Battery

SKU: **14-0014** x 1

QTY: 1



1501 Series M4 x 0.7mm Standoff (6mm OD, 12mm Length) - 4 Pack

SKU: **1501-0006-0120** x 1

QTY: 4



1501 Series M4 x 0.7mm Standoff (6mm OD, 24mm Length) - 4 Pack

SKU: **1501-0006-0240** x 1

QTY: 4



1501 Series M4 x 0.7mm Standoff (6mm OD, 43mm Length) - 4 Pack

SKU: **1501-0006-0430** x 2

QTY: 8



1501 Series M4 x 0.7mm Standoff (6mm OD, 48mm Length) - 4 Pack

SKU: **1501-0006-0480** x 1

QTY: 4



1502 Series 4mm ID Spacer (6mm OD, 4mm Length) - 4 Pack

SKU: **1502-0006-0040** x 1

QTY: 4



1502 Series 4mm ID Spacer (6mm OD, 8mm Length) - 4 Pack

SKU: **1502-0006-0080** x 1

QTY: 4



1502 Series 4mm ID Spacer (6mm OD, 12mm Length) - 4 Pack

SKU: **1502-0006-0120** x 1

QTY: 4



1504 Series 32mm OD Pattern Spacer (4mm Length)

SKU: **1504-0032-0040** x 1

QTY: 4



1505 Series 32mm OD Counterbored Pattern Spacer (6mm Length)

SKU: **1505-0032-0060** x 1

QTY: 1



1505 Series 32mm OD Counterbored Pattern Spacer (8mm Length)

SKU: **1505-0032-0080** x 5

QTY: 5



1611 Series Flanged Ball Bearing (8mm REX ID x 14mm OD, 5mm Thickness) - 2 Pack

SKU: **1611-0514-4008** x 12

QTY: 24



1616 Series Drop-Center Bearing Plate (2mm Drop) - 4 Pack

SKU: **1616-0016-0002** x 1

QTY: 4



1802 Series Servo Frame (43mm Width, for Standard Size Servos)

SKU: **1802-0043-0001** x 2

QTY: 2



1908 Series Servo Hub (25 Tooth Spline, 32mm Diameter)

SKU: **1908-0025-0032** x 2

QTY: 2



2000 Series Dual Mode Servo (25-2, Torque)

SKU: **2000-0025-0002** x 2

QTY: 2



2000 Series Dual Mode Servo (25-3, Speed)

SKU: **2000-0025-0003** x2

QTY: 2



2106 Series Stainless Steel REX Shaft (8mm Diameter, 56mm Length)

SKU: **2106-4008-0560** x 1

QTY: 1



2106 Series Stainless Steel REX Shaft (8mm Diameter, 80mm Length)

SKU: **2106-4008-0800** x 10

QTY: 10



2106 Series Stainless Steel REX Shaft (8mm Diameter, 120mm Length)

SKU: **2106-4008-1200** x 2

QTY: 2



2302 Series Aluminum, MOD 0.8, Hub Mount Gear (14mm Bore, 100 Tooth)

SKU: **2302-0014-0100** x 2

QTY: 2



2303 Series Steel, MOD 0.8 Pinion Gear (8mm REX Bore, 20 Tooth)

SKU: **2303-4008-0020** x 2

QTY: 2



2303 Series Steel, MOD 0.8 Pinion Gear (8mm REX Bore, 30 Tooth)

SKU: **2303-4008-0030** x 4

QTY: 4



2800 Series Zinc-Plated Steel Socket Head Screw (M4 x 0.7mm, 6mm Length) 25 Pack

SKU: **2800-0004-0006** x 2

QTY: 50



2800 Series Zinc-Plated Steel Socket Head Screw (M4 x 0.7mm, 8mm Length) 25 Pack

SKU: **2800-0004-0008** x 8

QTY: 200



2800 Series Zinc-Plated Steel Socket Head Screw (M4 x 0.7mm, 10mm Length) 25 Pack

SKU: **2800-0004-0010** x 4

QTY: 100



2800 Series Zinc-Plated Steel Socket Head Screw (M4 x 0.7mm, 12mm Length) 25 Pack

SKU: **2800-0004-0012** x 4

QTY: 100



2800 Series Zinc-Plated Steel Socket Head Screw (M4 x 0.7mm, 14mm Length) - 25 Pack

SKU: **2800-0004-0014** x 1

QTY: 25



2800 Series Zinc-Plated Steel Socket Head Screw (M4 x 0.7mm, 18mm Length) 25 Pack

SKU: **2800-0004-0018** x 2

QTY: 50



2800 Series Zinc-Plated Steel Socket Head Screw (M4 x 0.7mm, 20mm Length) - 25 Pack

SKU: **2800-0004-0020** x 1

QTY: 25



2800 Series Zinc-Plated Steel Socket Head Screw (M4 x 0.7mm, 30mm Length) 25 Pack

SKU: **2800-0004-0030** x 1

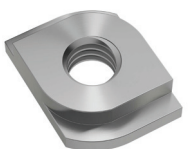
QTY: 25



2801 Series Zinc-Plated Steel Washer (4mm ID x 8mm OD) 25 Pack

SKU: **2801-0004-0008** x 4

QTY: 100



Hurricane Nut for goRAIL- 25 Pack

SKU: **2805-0004-0108** x 1

QTY: 25



2807 Series Stainless Steel Shim (8mm ID x 11mm OD, 0.50mm Thickness) - 12 Pack

SKU: **2807-0811-0500** x 3

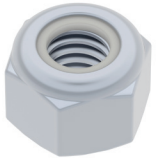
QTY: 36



2808 Series Stainless Steel Threaded Rod (M4 x 0.7mm, 300mm Length) 2 Pack

SKU: **2808-0004-0300** x 1

QTY: 2



2812 Series Zinc-Plated Steel Nylon-Insert Locknut (M4 x 0.7mm, 7mm Hex) 25 Pack

SKU: **2812-0004-0007** x 8

QTY: 200



Plastic Hinge Block - 25 Pack

SKU: **2902-0025-0001** x 1

QTY: 25



2903 Series Nylon Ball Linkage (M4, 24.5mm Length) - 4 Pack

SKU: **2903-0004-0245** x 1

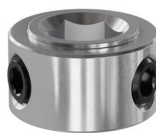
QTY: 4



Zip Tie (100mm Length, Black) 100 Pack

SKU: **2909-0101-0100** x 1

QTY: 100



2920 Series Steel Set-Screw Collar (8mm REX Bore) - 2 Pack

SKU: **2920-0001-4008** x 2

QTY: 4



Battery Charger (NiCad/NiMH, 12-1)

SKU: **3101-0012-0001** x 1

QTY: 1



Servo Programmer for 2000 Series Dual Mode Servo

SKU: **3102-0001-0001** x 1

QTY: 1



ServoBlock™ (Standard Size, 25 Tooth Spline, Hub Shaft)

SKU: **3202-0001-2501** x 1

QTY: 2



3307 Series 8mm Pitch Steel Set Screw Sprocket (8mm REX Bore, 10 Tooth)

SKU: **3307-4008-0010** x 4

QTY: 4



3309 Series 8mm Pitch Plastic Chain Link 50 Links

SKU: **3309-0108-0050** x 5

QTY: 250



8mm Pitch Steel Hub-Mount Sprocket (14mm Bore, 14 Tooth)

SKU: **3310-0014-0014** x 1

QTY: 4



Acetal Timing Belt Idler (6mm ID x 12mm OD, 12mm Width, 1-1) 2 Pack

SKU: **3413-0001-0001** x 2

QTY: 4



3601 Series Rhino Wheel (14mm Bore, 96mm Diameter)

SKU: **3601-0014-0096** x 4

QTY: 4



3604 Series Omni Wheel (14mm Bore, 96mm Diameter)

SKU: **3604-0014-0096** x 4

QTY: 4



3613 Series Gecko™ Wheel (14mm Bore, 72mm Diameter)

SKU: **3613-0014-0072** x 2

QTY: 2



XT30 [MH-FC] to Tamiya [MH-FC] Adaptor (60mm Length)

SKU: **3801-0203-0060** x 1

QTY: 1



2-Pos JST VH [MH-FC] to 3.5mm Bullet [MH-FC] Adaptor (100mm Length)

SKU: **3801-0613-0100** x 4

QTY: 4



Encoder Cable, 600mm Length (4-Pos JST PH [MH-FC] to 4-Pos JST XH [MH-FC])

SKU: **3801-0709-0600** x 4

QTY: 4



3-Pos TJC8 Servo Extension (MH-FC to FH-MC, 300mm Length)

SKU: **3802-1718-0300** x 2

QTY: 2



3-Pos TJC8 Servo Extension (MH-FC to FH-MC, 600mm Length)

SKU: **3802-1718-0600** x 2

QTY: 2



4001 Series Clamping Servo to Shaft Coupler (25 Tooth Spline to 8mm REX Bore)

SKU: **4001-0025-4008** x 1

QTY: 1



4007 Series Hyper Coupler (8mm REX Bore to 8mm REX Bore)

SKU: **4007-4008-4008** x 1

QTY: 1



Wera Tools 2.5mm Ball End Hex-Plus L-Key

SKU: **5027103001** x 1

QTY: 1



Wera Tools 3mm Ball End Hex-Plus L-Key

SKU: **5027104001** x 1

QTY: 1



7mm Combination Nut Driver

SKU: **4206-0070-0001** x 1

QTY: 1



5203 Series Yellow Jacket Planetary Gear Motor
(19.2:1 Ratio, 24mm Length 8mm REX Shaft, 312 RPM, 3.3 - 5V Encoder)

SKU: **5203-2402-0019** x 4

QTY: 4