

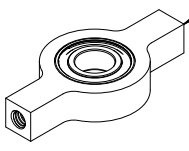
Assembly Instructions for
goBILDA® Linear Actuator Kit
3212-0001-0001



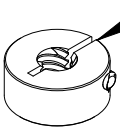
Motor and Motor Mount Not Included

Kit Contents:

Pillow Block, 8mm Bore
SKU: 1606-0043-0008
QTY: 1



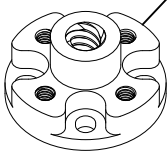
8mm Lead Screw Collar
SKU: 3504-0804-2109
QTY: 1



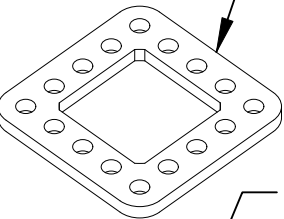
Thrust Bearing, 8mm Bore
SKU: 1613-0516-0008
QTY: 2



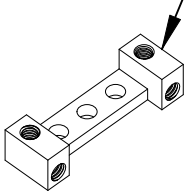
Lead Screw Pattern Nut
SKU: 3505-0804-3216
QTY: 1



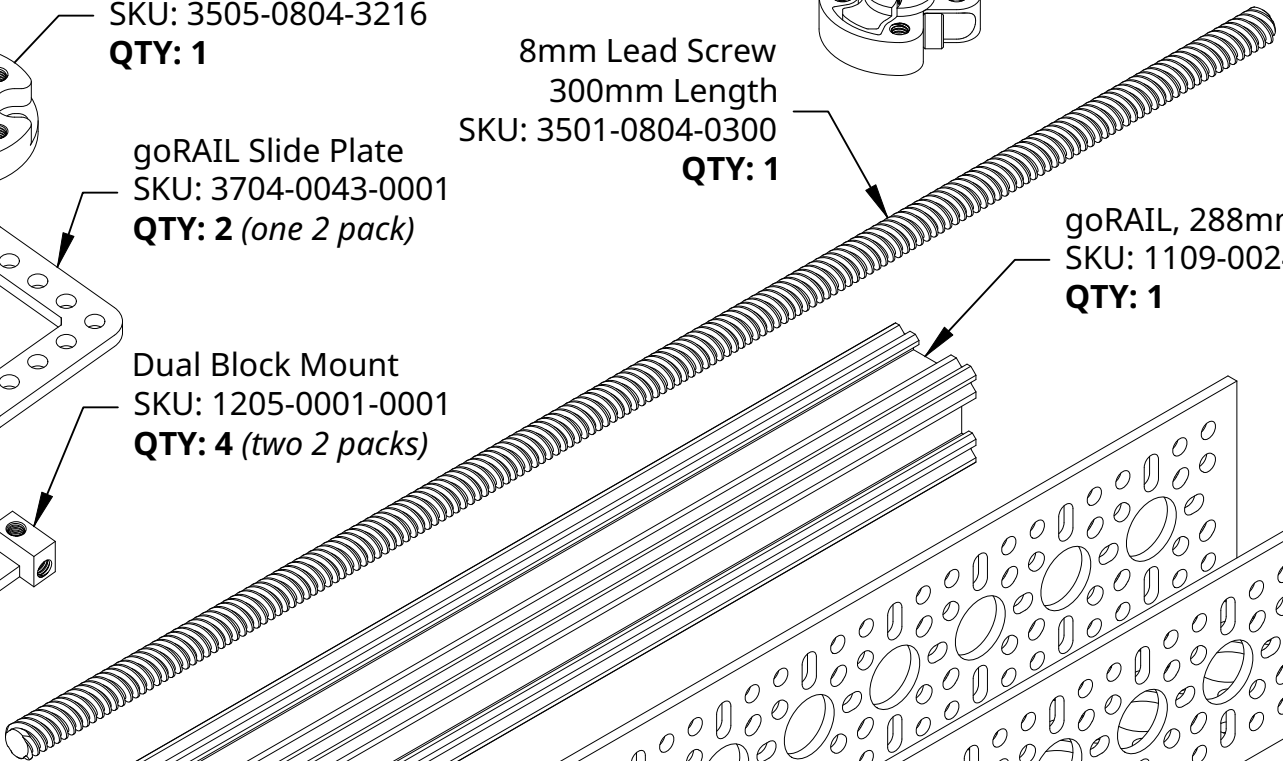
goRAIL Slide Plate
SKU: 3704-0043-0001
QTY: 2 (one 2 pack)



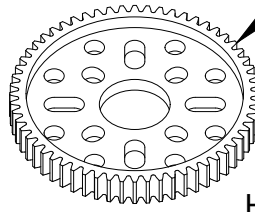
Dual Block Mount
SKU: 1205-0001-0001
QTY: 4 (two 2 packs)



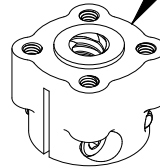
8mm Lead Screw
300mm Length
SKU: 3501-0804-0300
QTY: 1



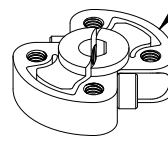
MOD 0.8 Gear, 60 Tooth
SKU: 2302-0014-0060
QTY: 2



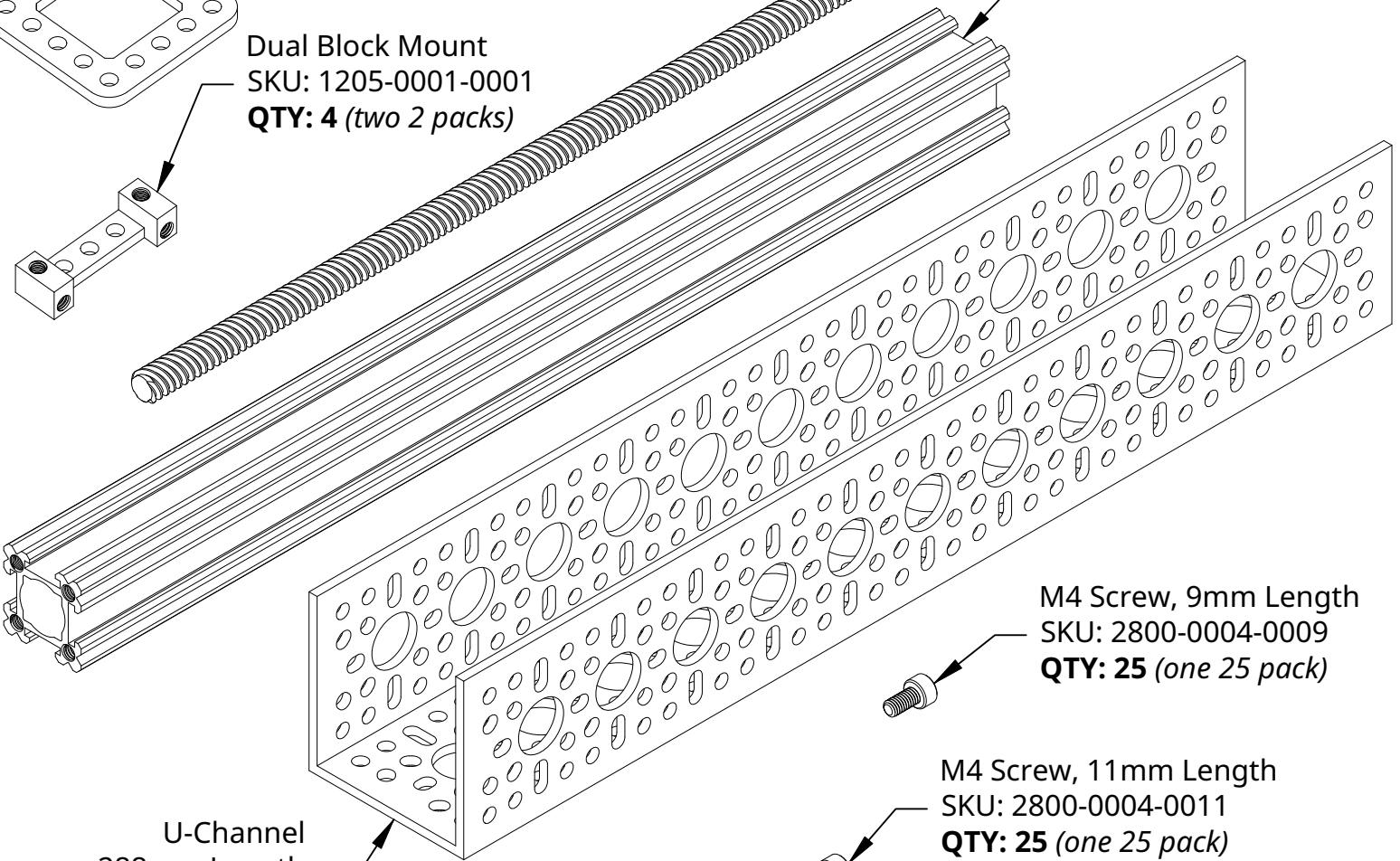
Hyper Hub, 8mm Lead Screw Bore
SKU: 1310-0016-5008
QTY: 1



Sonic Hub, 6mm D-Bore
SKU: 1309-0016-1006
QTY: 1



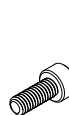
goRAIL, 288mm Length
SKU: 1109-0024-0288
QTY: 1



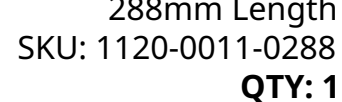
M4 Screw, 9mm Length
SKU: 2800-0004-0009
QTY: 25 (one 25 pack)

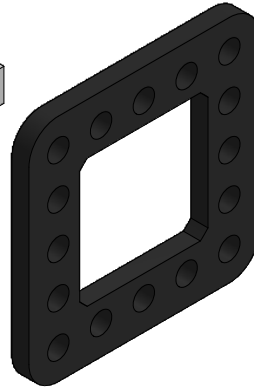
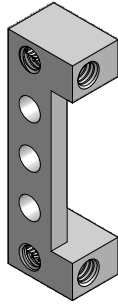
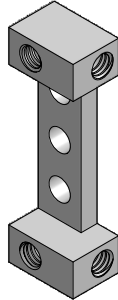
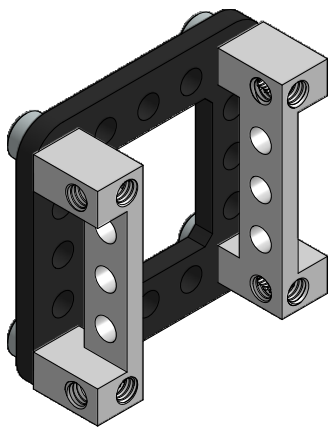


M4 Screw, 11mm Length
SKU: 2800-0004-0011
QTY: 25 (one 25 pack)



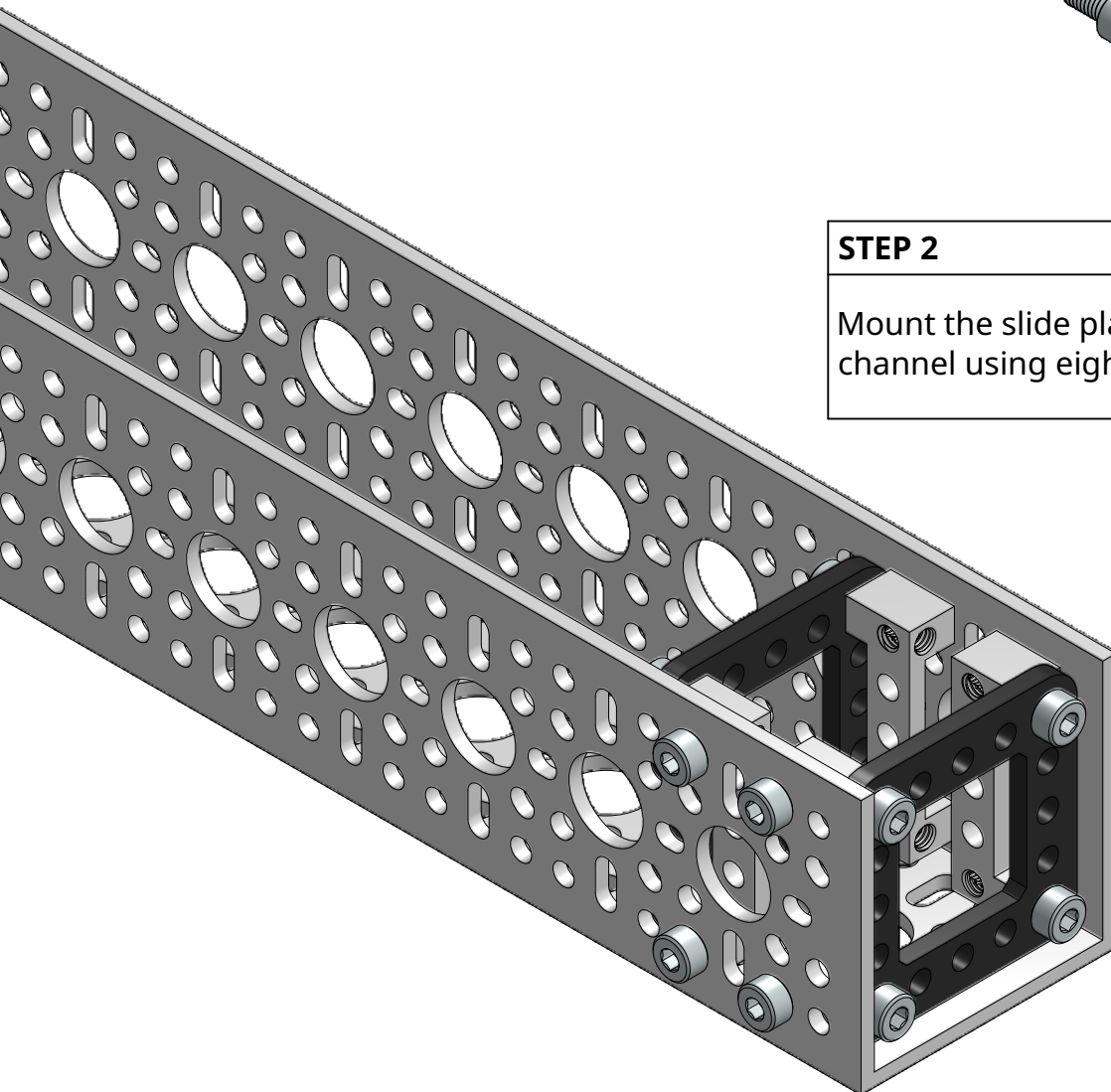
U-Channel
288mm Length
SKU: 1120-0011-0288
QTY: 1





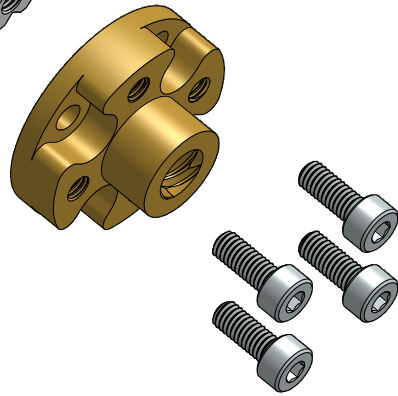
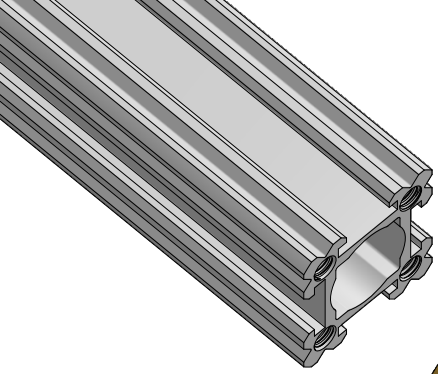
STEP 1

Using eight 9mm M4 screws, attach the dual block mounts to the slide plates.



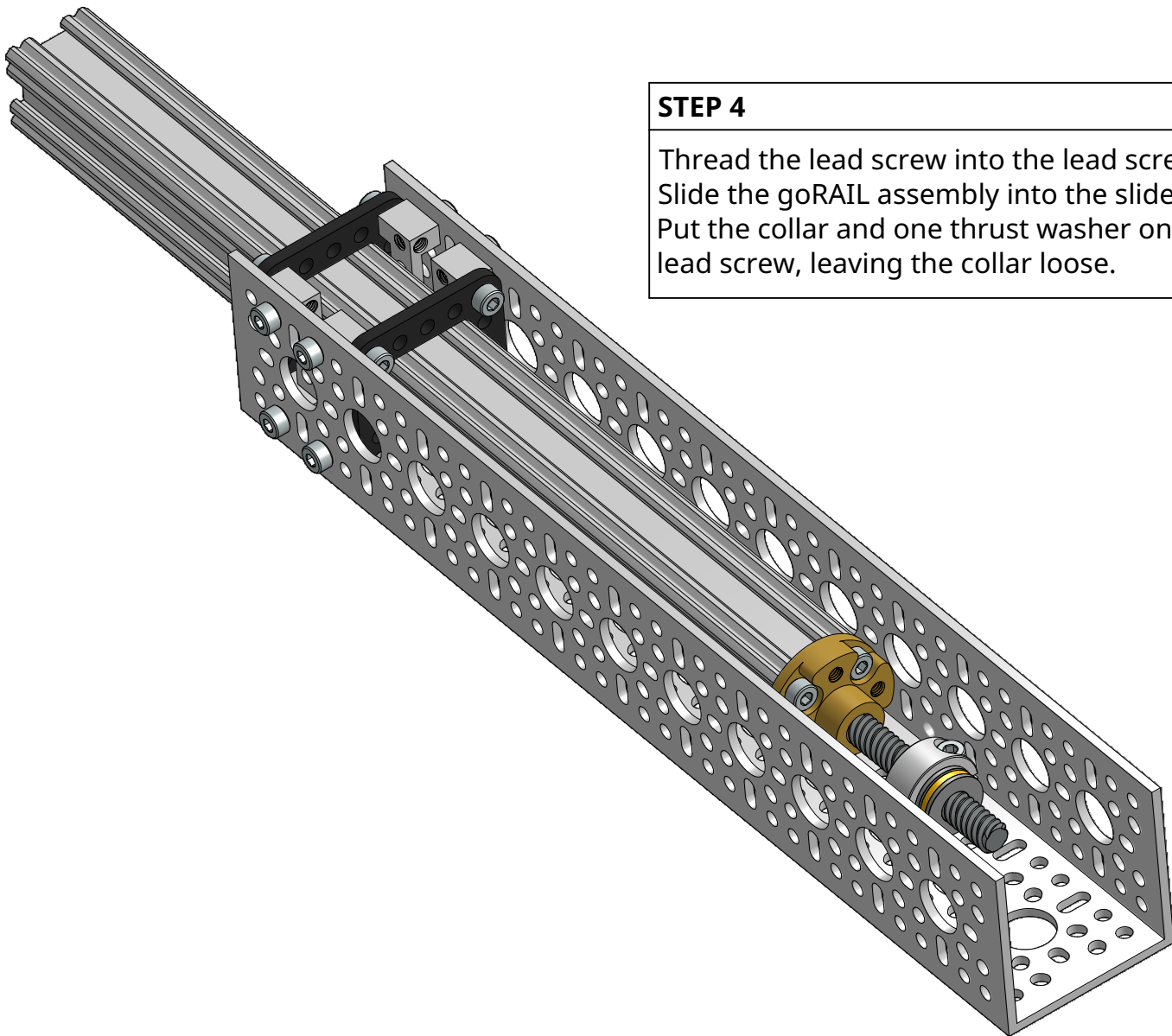
STEP 2

Mount the slide plate assemblies into the channel using eight 11mm M4 screws.



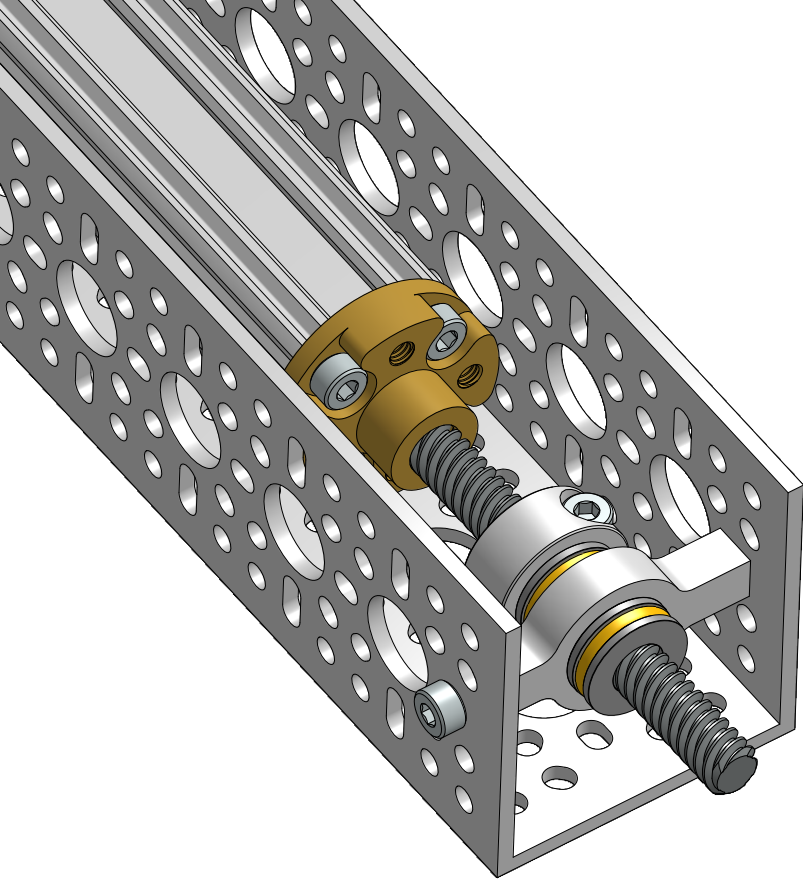
STEP 3

Use four 11mm M4 screws to attach the lead screw nut to the end of the goRAIL.



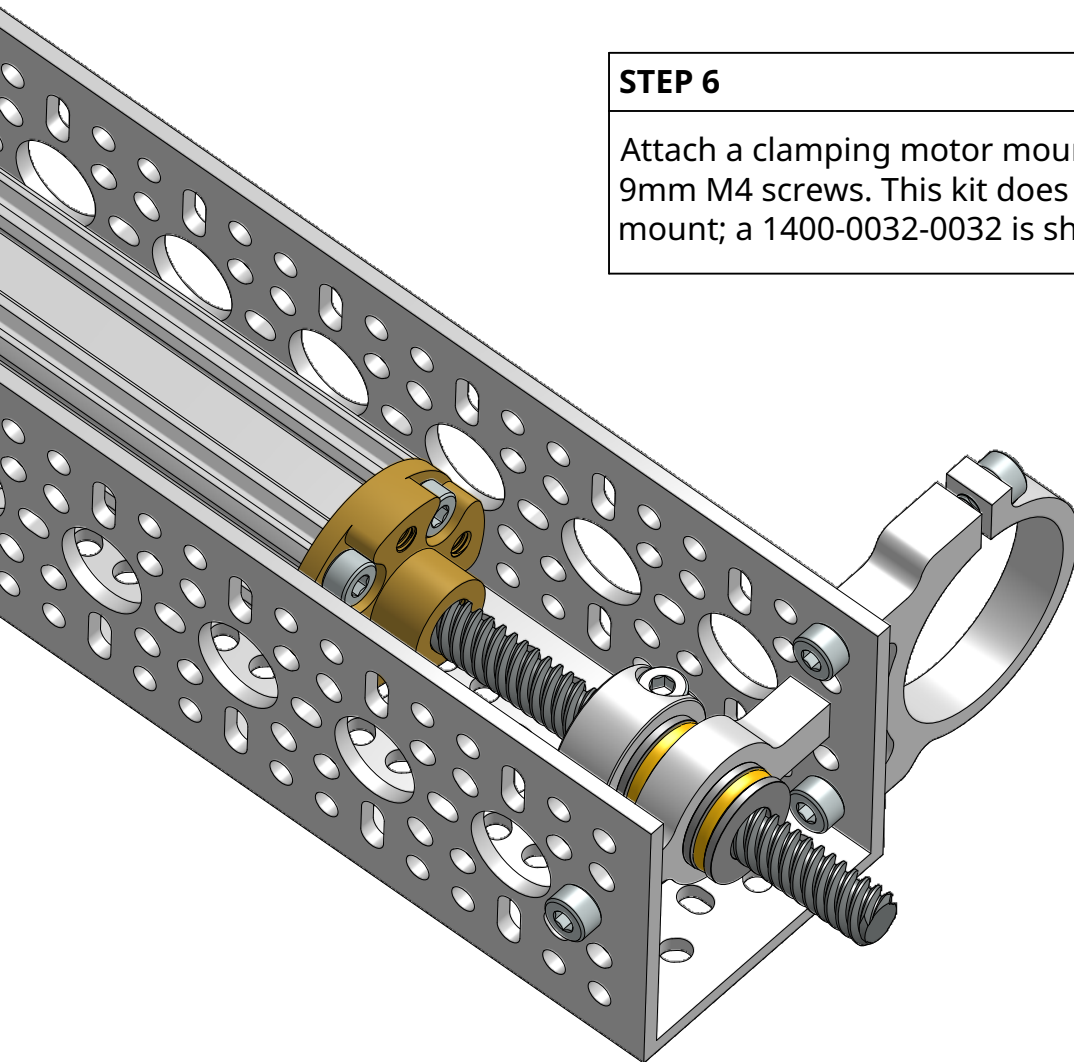
STEP 4

Thread the lead screw into the lead screw nut. Slide the goRAIL assembly into the slide plates. Put the collar and one thrust washer onto the lead screw, leaving the collar loose.



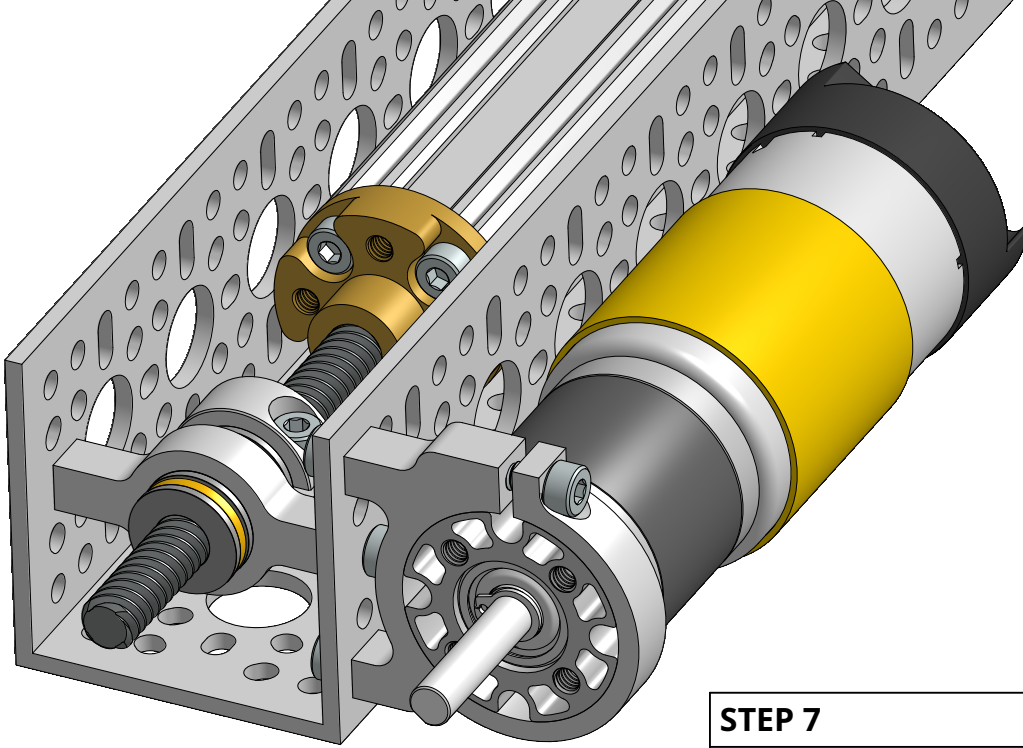
STEP 5

Slide the pillow block onto the lead screw and fasten it to the channel using two 9mm M4 screws.



STEP 6

Attach a clamping motor mount in place with two 9mm M4 screws. This kit does not include a motor mount; a 1400-0032-0032 is shown as an example.

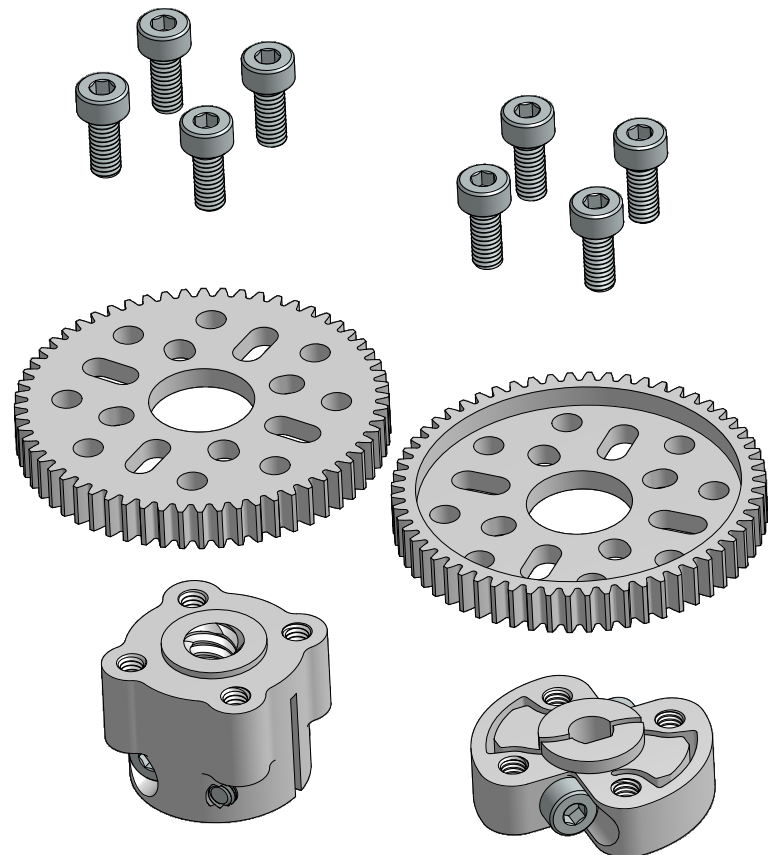


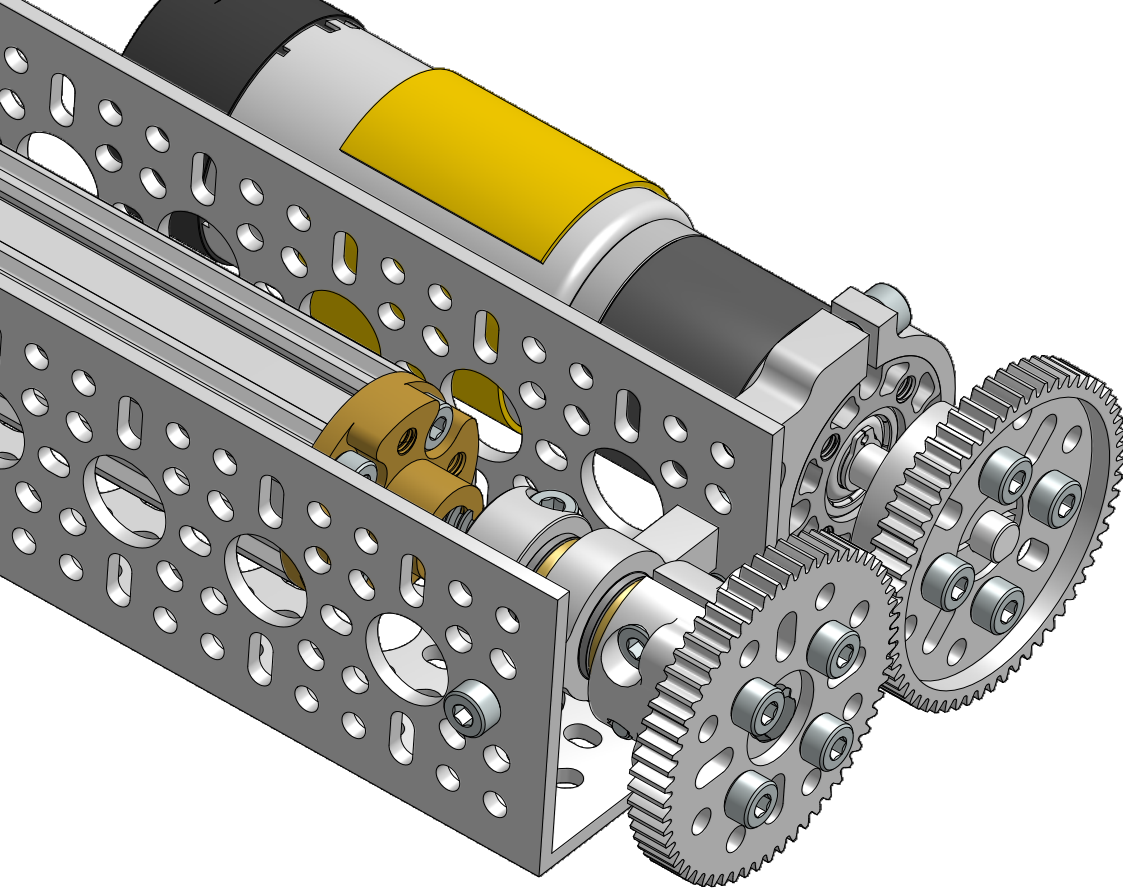
STEP 7

Insert a motor into the clamping mount as shown. Tighten the pinch bolt. This kit does not include a motor; a 5202-0002-0005 is shown as an example.

STEP 8

Mount the hubs to the gears as shown using eight 11mm M4 screws. Note the gear orientation. Position the one that gets attached to the 8mm lead screw bore hub so the "dished out" portion of the gear is facing toward the hub.





STEP 9

Position the gear assemblies on the motor shaft and lead screw. Slide the collar and gear on the lead screw together towards the pillow block. Tighten the pinch bolts on the collar and both hubs.

